

Light efficiency:

37 Lumen/Watt

Light quality:

CRI: 77.4

Color temperature:

3140 K

Output: 12172 lm

Peak: 53754 cd

Power: 328 W

PF: 1.0



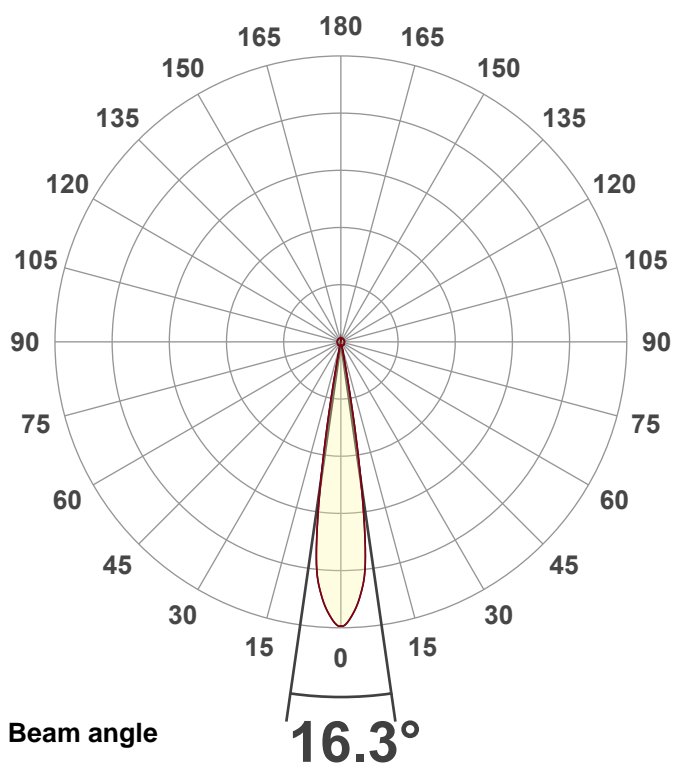
Product name:

Hydro Flex L7 (Zoom 50% 3200K)

Item number:

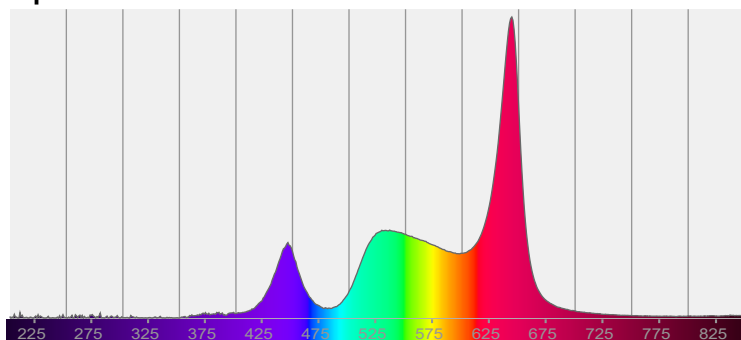
Date and time:

8/25/2025 3:30:00 PM



CIE 1931
x: 0.423
y: 0.391

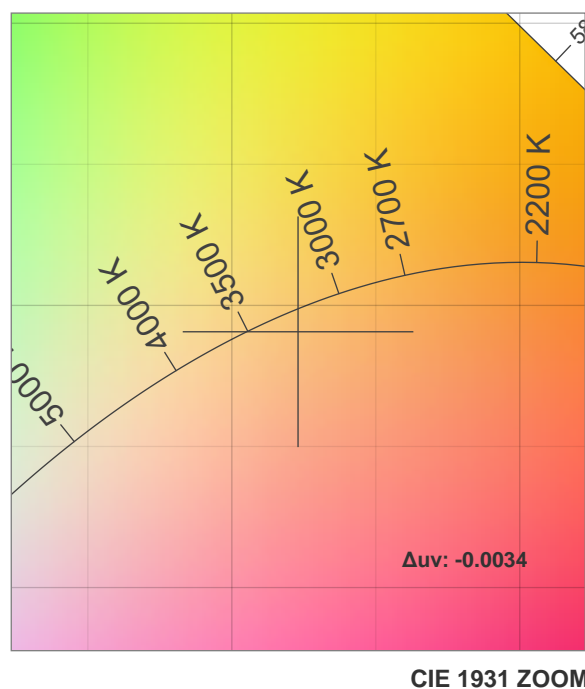
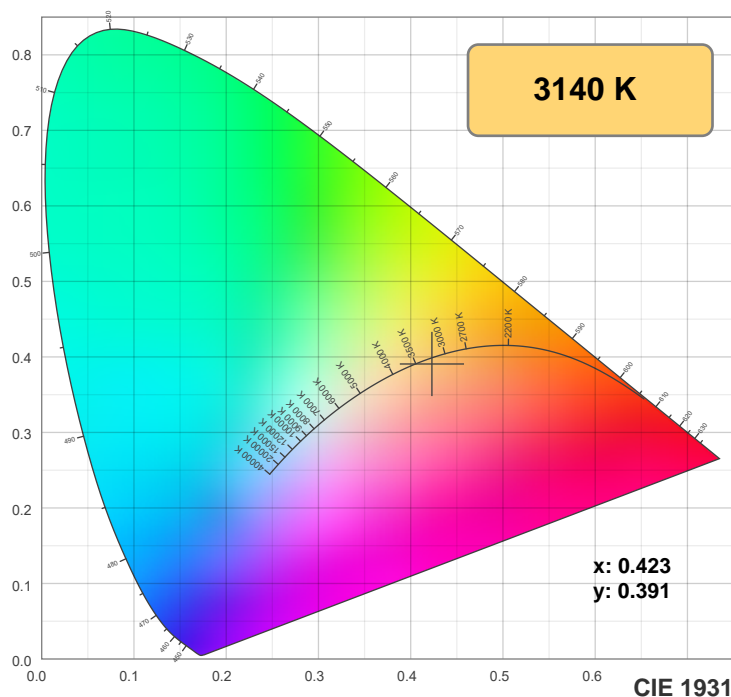
Spectra



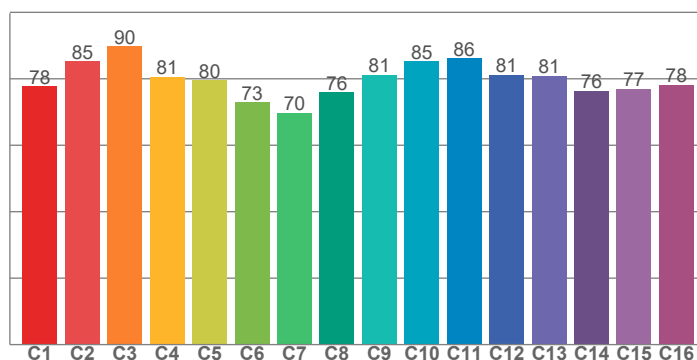
Power

Voltage: 115 V
Current: 2.85 A
Frequency: 0 Hz

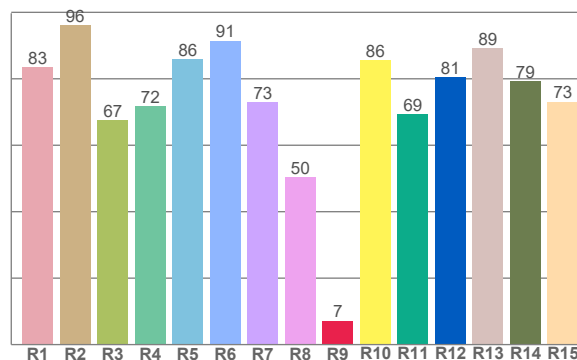
Color details



TM-30: 80.5



CRI: 77.4 (R1-R8)



CRI R values, only R1-R8 are used to calculate final CRI value

R1	R2	R3	R4	R5	R6	R7	R8	R9	R10	R11	R12	R13	R14	R15
83.4	96.2	67.4	71.7	86.0	91.4	72.9	50.3	7.2	85.7	69.4	80.5	89.3	79.4	73.1

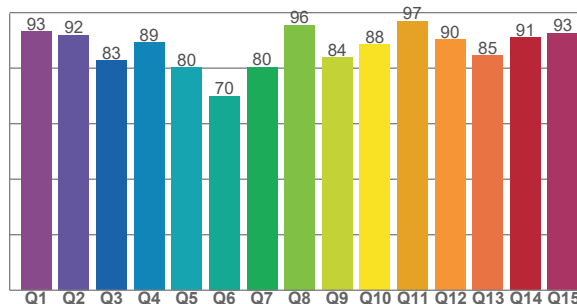
TM30 C values, 16 binned values out of total of 99 C values

C1	C2	C3	C4	C5	C6	C7	C8	C9	C10	C11	C12	C13	C14	C15	C16
77.7	85.2	89.7	80.5	79.5	72.9	69.8	75.9	81.2	85.3	86.2	81.2	80.9	76.4	77.0	78.2

CQS Q values

Q1	Q2	Q3	Q4	Q5	Q6	Q7	Q8	Q9	Q10	Q11	Q12	Q13	Q14	Q15
93.3	91.9	82.8	89.3	80.2	70.0	80.5	95.6	83.8	88.4	97.1	90.3	84.6	91.0	92.7

CQS: 85.5



Color parameters

Color temperature	Color rendering index	Red component	Color fidelity	Color gamut	Color quality scale	Color coordinate cie 1931	Color coordinate cie 1931	Color coordinate	Color coordinate	Color deviation from black body
CCT	CRI	CRI R9	TM30 Rf	TM30 Rg	CQS	x	y	u	v	Δuv
3140 K	77.4	7.2	80.5	116.3	85.5	0.423	0.391	0.247	0.343	-0.0034

TM-30 details

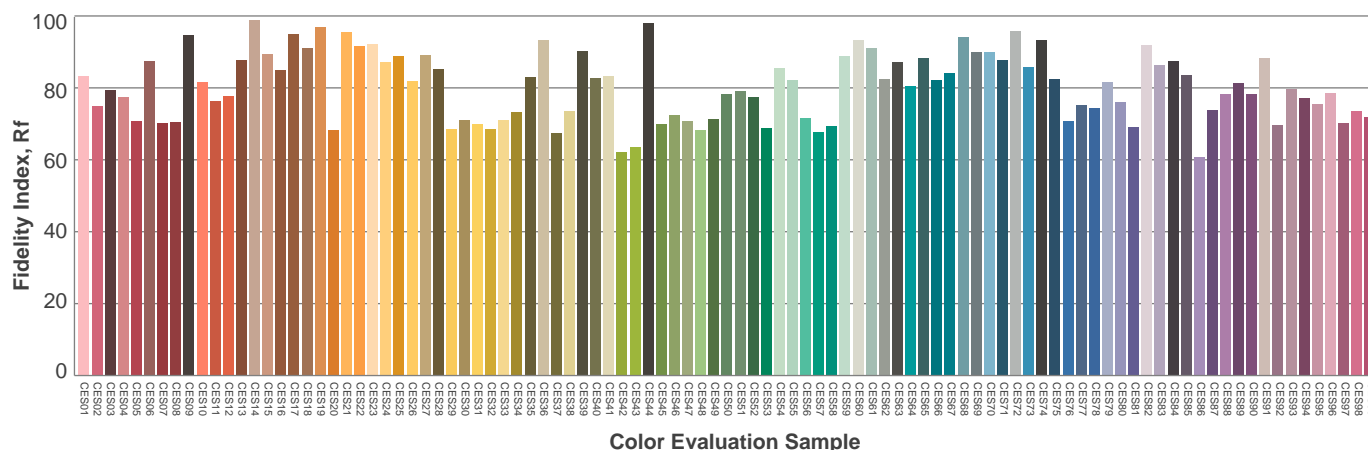
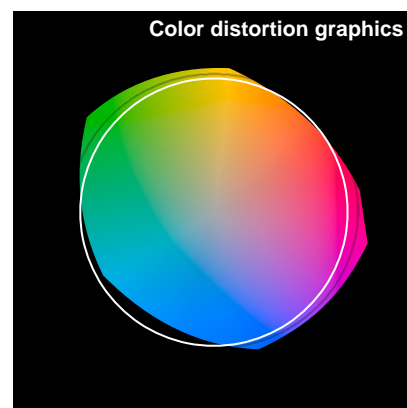
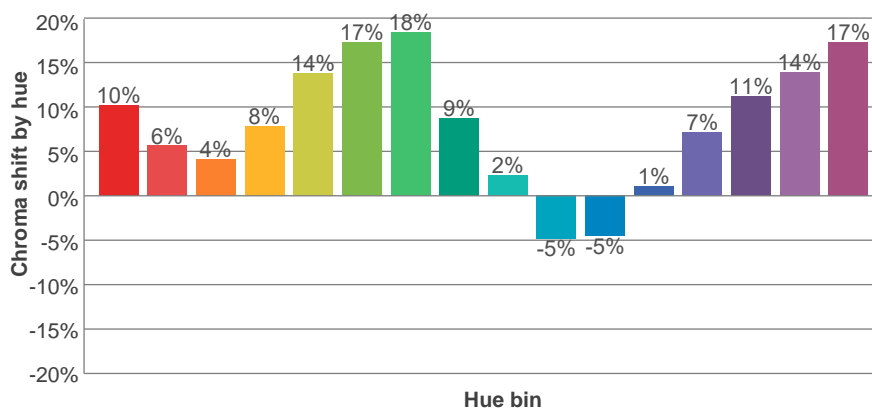
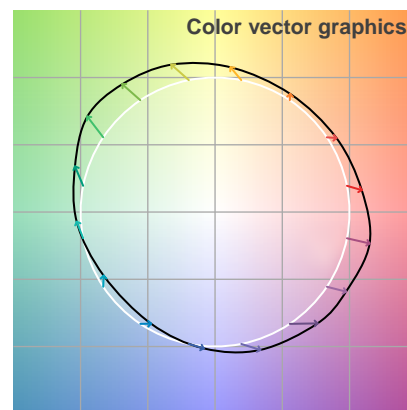
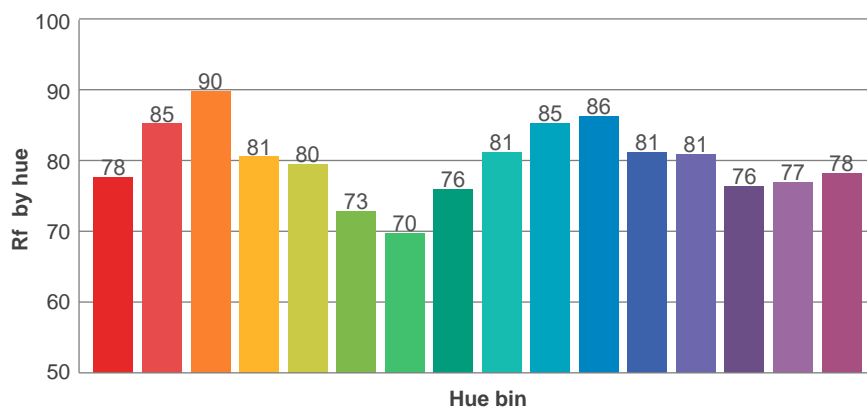
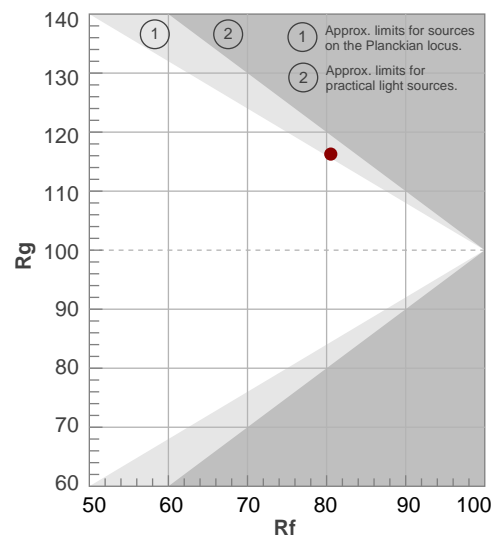
Rf 80.5

Fidelity index Rf

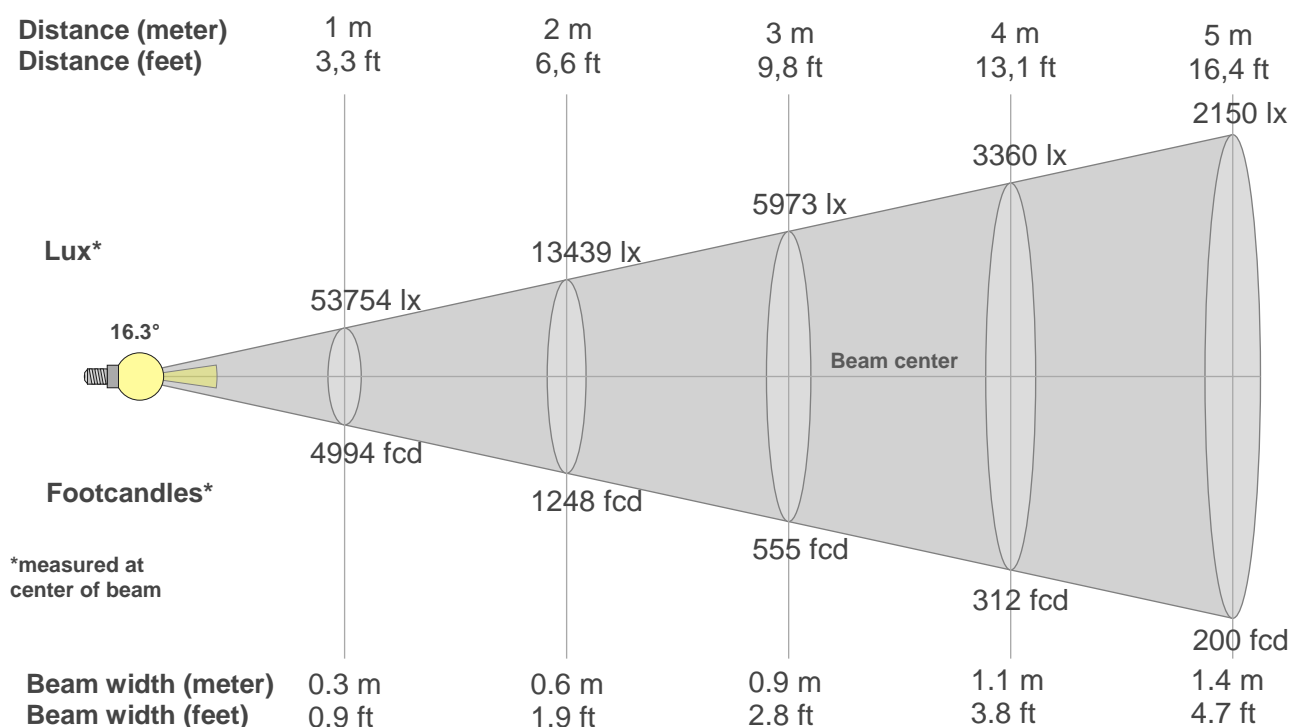
Rg 116.3

Gamut index Rg

Hue Bin	R _f	Shifts (%)	
		Chroma	Hue
1	78	10%	-5%
2	85	6%	-4%
3	90	4%	2%
4	81	8%	10%
5	80	14%	10%
6	73	17%	5%
7	70	18%	-6%
8	76	9%	-13%
9	81	2%	-13%
10	85	-5%	-7%
11	86	-5%	7%
12	81	1%	11%
13	81	7%	13%
14	76	11%	17%
15	77	14%	5%
16	78	17%	0%



Beam details



Beam intensities from 1-20m

1m	2m	3m	4m	5m	6m	7m	8m	9m	10m	11m	12m	13m	14m	15m	16m	17m	18m	19m	20m
3.3ft	6.6ft	9.8ft	13.1ft	16.4ft	19.7ft	23ft	26.2ft	29.5ft	32.8ft	36.1ft	39.4ft	42.7ft	45.9ft	49.2ft	52.5ft	55.8ft	59.1ft	62.3ft	65.6ft
53754lx	13439lx	5973lx	3360lx	2150lx	1493lx	1097lx	840lx	664lx	538lx	444lx	373lx	318lx	274lx	239lx	210lx	186lx	166lx	149lx	134lx
4993.9fcd	1248.5fcd	554.9fcd	312.1fcd	199.8fcd	138.7fcd	101.9fcd	78fcd	61.7fcd	49.9fcd	41.3fcd	34.7fcd	29.5fcd	25.5fcd	22.2fcd	19.5fcd	17.3fcd	15.4fcd	13.8fcd	12.5fcd

Intensities in 0° c-plane

0°	1°	2°	3°	4°	5°	6°	7°	8°	9°	10°	11°	12°	13°	14°	15°	16°	17°	18°	19°
53.8k	53.4k	52.3k	50.8k	49.0k	46.7k	43.5k	37.4k	28.6k	18.6k	9.1k	3.2k	1.3k	0.9k	0.8k	0.8k	0.8k	0.8k	0.8k	0.8k
100%	99%	97%	94%	91%	87%	81%	70%	53%	35%	17%	6%	2%	2%	2%	1%	1%	1%	1%	1%

Intensities in 90° c-plane

0°	1°	2°	3°	4°	5°	6°	7°	8°	9°	10°	11°	12°	13°	14°	15°	16°	17°	18°	19°
53.8k	53.4k	52.3k	50.8k	49.0k	46.7k	43.5k	37.4k	28.6k	18.6k	9.1k	3.2k	1.3k	0.9k	0.8k	0.8k	0.8k	0.8k	0.8k	0.8k
100%	99%	97%	94%	91%	87%	81%	70%	53%	35%	17%	6%	2%	2%	2%	1%	1%	1%	1%	1%

Intensities in 180° c-plane

0°	1°	2°	3°	4°	5°	6°	7°	8°	9°	10°	11°	12°	13°	14°	15°	16°	17°	18°	19°
53.8k	53.4k	52.3k	50.8k	49.0k	46.7k	43.5k	37.4k	28.6k	18.6k	9.1k	3.2k	1.3k	0.9k	0.8k	0.8k	0.8k	0.8k	0.8k	0.8k
100%	99%	97%	94%	91%	87%	81%	70%	53%	35%	17%	6%	2%	2%	2%	1%	1%	1%	1%	1%

Intensities in 270° c-plane

0°	1°	2°	3°	4°	5°	6°	7°	8°	9°	10°	11°	12°	13°	14°	15°	16°	17°	18°	19°
53.8k	53.4k	52.3k	50.8k	49.0k	46.7k	43.5k	37.4k	28.6k	18.6k	9.1k	3.2k	1.3k	0.9k	0.8k	0.8k	0.8k	0.8k	0.8k	0.8k
100%	99%	97%	94%	91%	87%	81%	70%	53%	35%	17%	6%	2%	2%	2%	1%	1%	1%	1%	1%

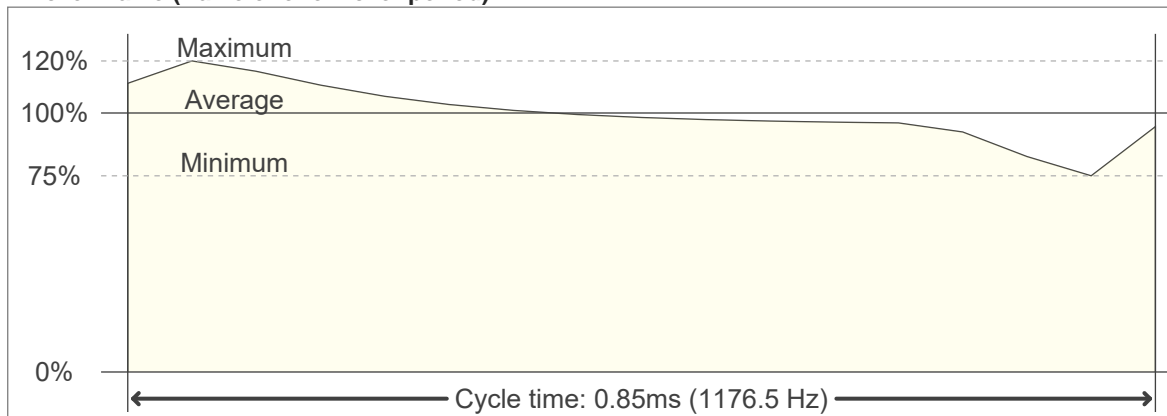
Beam angle 50%	Field angle 10%	Cutoff angle 2,5%	Intensity ratio in 120° cone	Intensity ratio in 90° cone
16.3°	21.1°	24°	46.9%	39.0%

Flicker

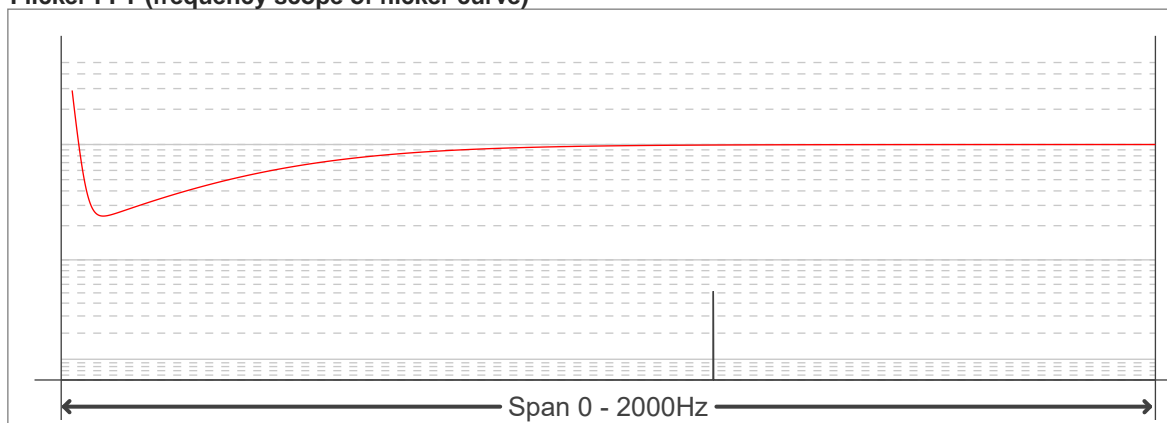
Flicker curve (complete sampled flicker signal)



Flicker frame (frame of one flicker period)



Flicker FFT (frequency scope of flicker curve)



Flicker results:

Flicker frequency:		1176.47 Hz	
Flicker index:	0.04	JA8/10 40Hz	0.22 %
Flicker percentage:	22.86 %	JA8/10 90Hz	0.32 %
SVM: (Visual flicker)	0.1	JA8/10 200Hz	0.53 %
PstLM	0	JA8/10 400Hz	0.94 %
Mp	0.12	JA8/10 1000Hz	2.72 %

Flicker conditions:

Sample rate:	20000 samples/second
--------------	----------------------